

REA JET

INDUSTRIAL CODING AND
MARKING SOLUTIONS -
MADE IN GERMANY

REA JET CL & FL

Laser Safety Enclosure



Most flexible laser cabinet workstation for various laser jobs



As a stand-alone manual workstation the REA JET Laser Safety Enclosure provides a wide range of applications for laser marking on different materials, surfaces and product sizes. The compact system is a convenient and easy to operate solution in low volume production to permanently mark products, for example with logos,

Features:

- Suitable for both, REA JET CL CO₂ Laser and REA JET FL Fiber Laser
- Mounting options for the REA JET CL Laser are left, right and rear of the cabin exterior wall
- Space-saving installation of the REA JET FL Laser on the workstation's rear wall
- For the precise alignment and marking of various product formats, lenses of different focal lengths and variable installation heights of the laser are available
- Wide and smoothly to open door allows ergonomical access to processing chamber
- Sliding door with guard locking for process save marking to avoid the risk of job abortion by accidentally opened door
- Large range of height adjustment via handwheel by vertical motion of product table to place product at perfect distance for laser focus
- Robust and spacious dimensioned work table for simple product intake (370 x 400 mm)
- External connection of dust extraction unit with flexible suction hose inside
- The laser workstation is designed to operate as a table top unit, the base frame - which is equipped with wheels - is an available option
- LED interior lights to illuminate loading compartment

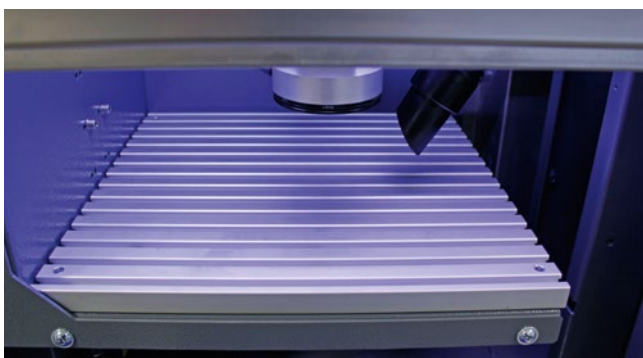
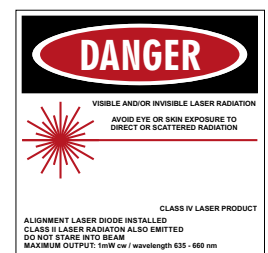
product information, dimensions and codes for traceability. The REA JET laser workstation is an all-in-one solution of laser protection class 1 which can incorporate both REA JET laser technologies, the REA JET CL CO₂ Laser as well as the REA JET FL Fiber Laser.

Single button operation:

- Easy operation of the laser workstation via integrated control panel, no external PC connection required
- Start marking with ready indication
- Stop button to abort process
- Control switches for cabinet light and pilot laser operation

Workstation dimensions:

- Height 750 mm (door closed)
Height 1,120 mm (door open)
- Depth 700 mm + 100 mm hose of extraction unit
- Width 700 mm with REA JET FL Laser mounted from backside, additional 185 mm with REA JET CL Laser mounted on left or right hand side
- The capacity of the loading compartment allows to insert products with measurements up to 470 x 375 x 360 mm (width x depth x height)



Large product bed area to place components



Flexible placement of suction hose



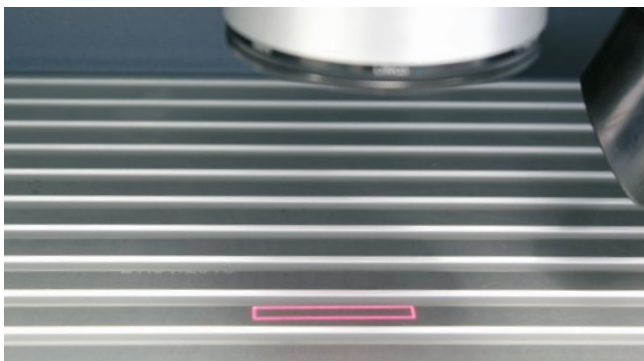
- 1 Large and easy to open sliding door for comfortable access to loading space
- 2 Special protection glasses for either REA JET CO₂-Laser or REA JET Fiber Laser applications
- 3 I/O and safety ports
- 4 Connection pipes for air supply and exhaust
- 5 Manual height adjustment of the product table through linear spindle and counting unit
- 6 REA JET CO₂-laser can be installed in two mounting heights and on left or right hand side
- 7 Two lifting lugs for safe transportation



- 1 Large dimensioned and stable product table for objects of various geometries. Profiled surface for optimized positioning of the products and consistent quality of laser marking in serial operation
- 2 Locking and safety switches
- 3 Height adjustable leveling feet and mounting position for optional baseframe



Invisible laser radiation
Laser Class 4
Visible laser radiation
Laser Class 2
Avoid eye or skin exposure
to direct or scattered radiation
According to EN 60825-1:2014



Pilot laser for exact positioning of products



REA JET CL CO₂-Laser mounted sideways



Handwheel for adjustment of product table



Laser workstation basic function operation panel

REA JET



REA Elektronik GmbH

Teichwiesenstrasse 1

64367 Muehltal

Germany

T: +49 (0)6154 638-0

F: +49 (0)6154 638-195

E: info@rea-jet.de

www.rea-jet.com